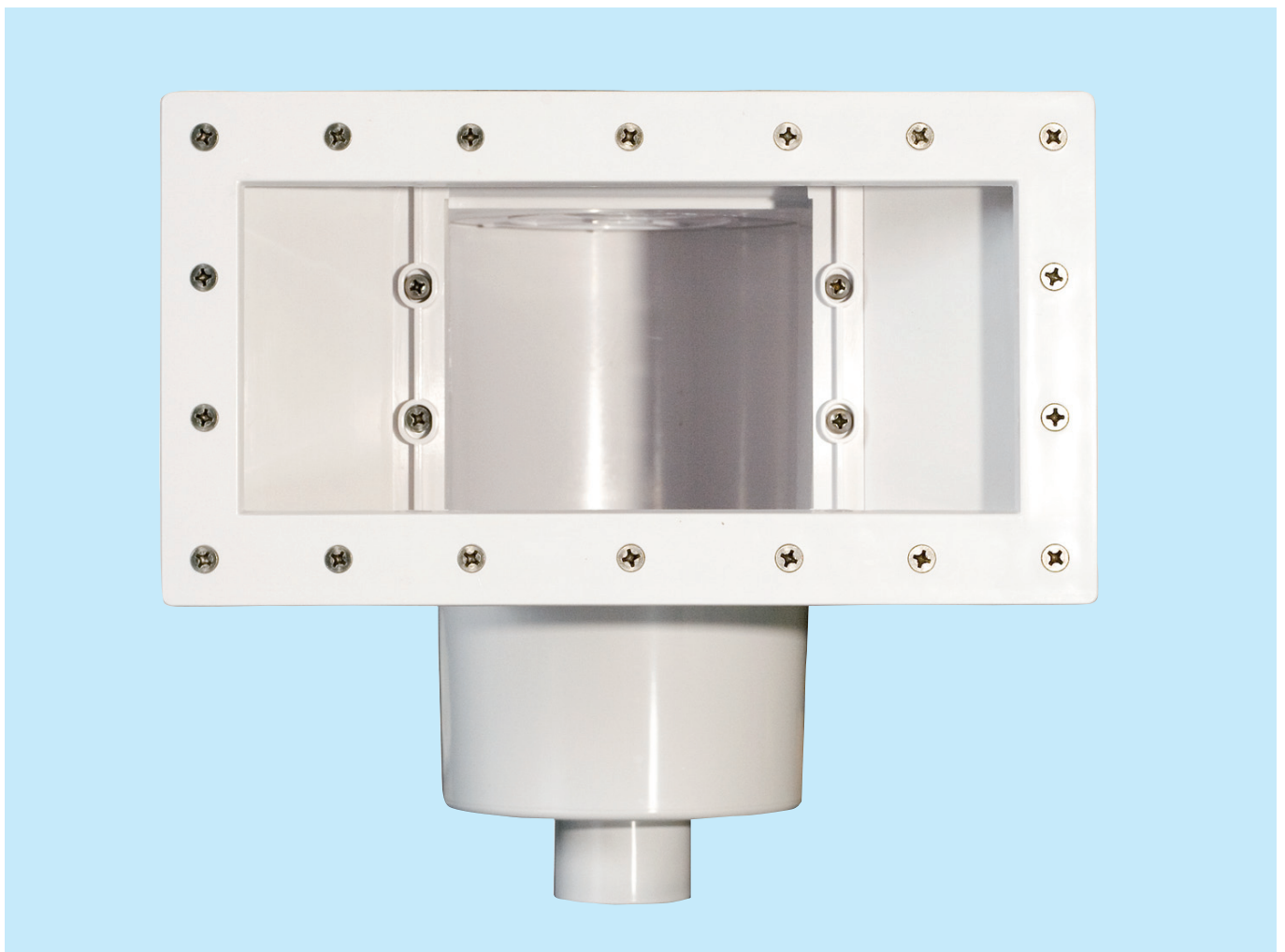


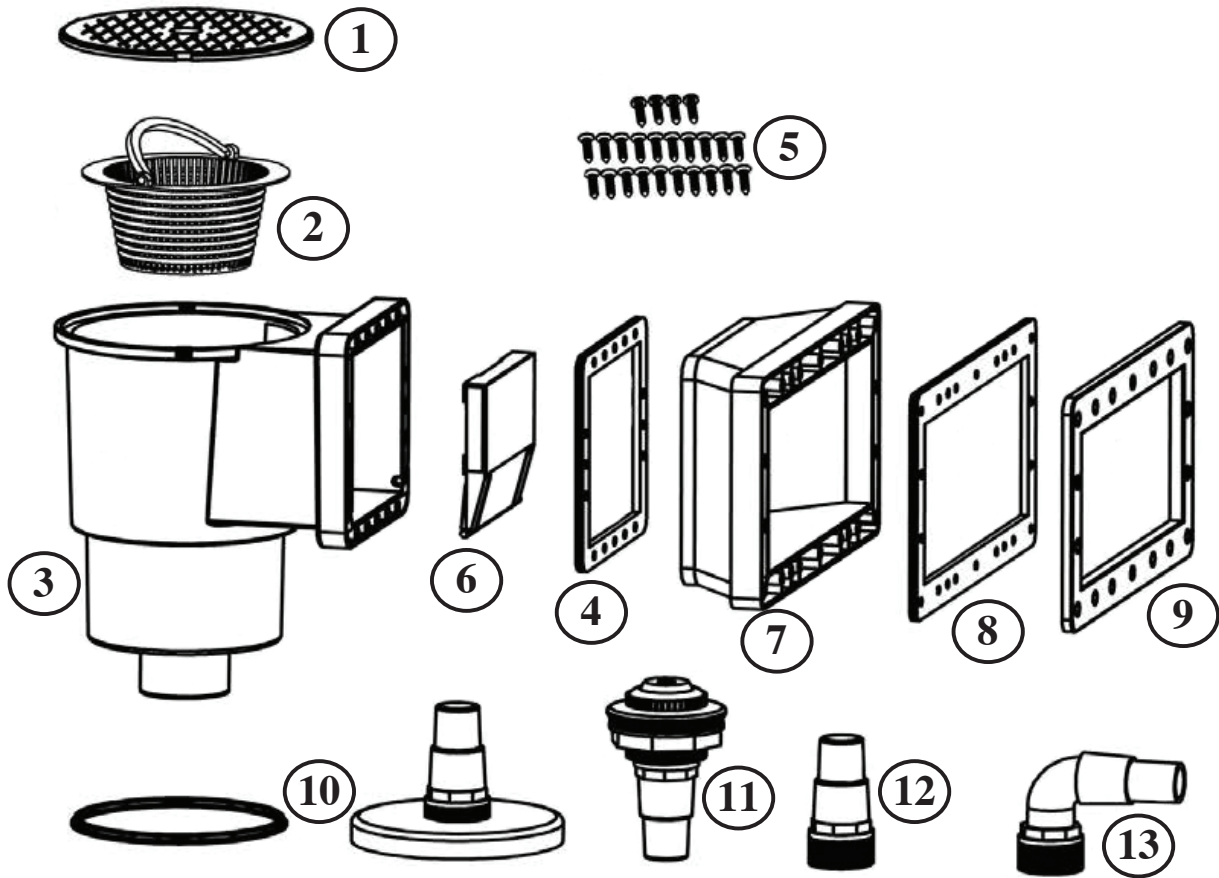
# **BLUE SEAL® WIDE MOUTH ABS THRU WALL SKIMMER**

**MODEL BS 04243**

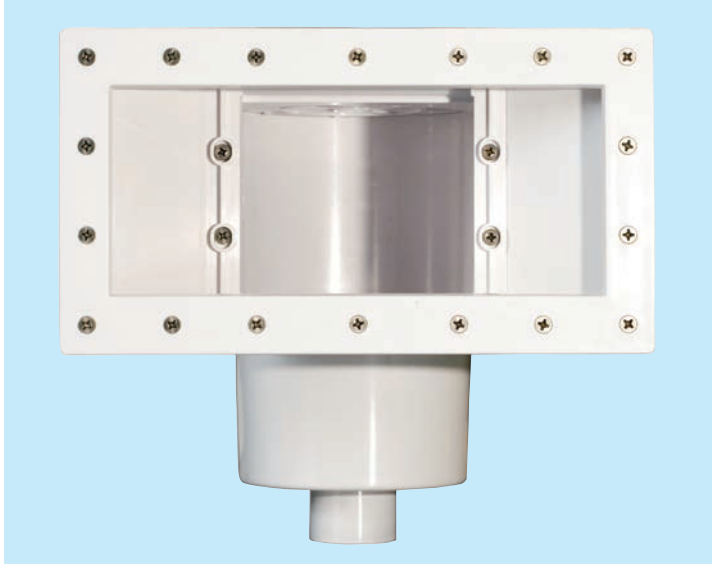


*Congratulations on purchasing a Blue Seal®  
Pro Series Automatic Skimmer*

# BS 04243 WIDE MOUTH SKIMMER PARTS



PART #	MODEL #	DESCRIPTION	QTY
1	AC 70742	Skimmer Cover	1
2	AC 49603	Strainer Basket	1
3	BS 04103BD	Skimmer Body	1
4	AC 70165	Seal Gasket	1
5	AC 70688	SS Screw Kit for Wide Mouth Skimmer	1
6	AC 50210	Skimmer Weir with Foam	1
7	AC 91308	Wide Mouth Adapter	1
8	AC 70173	Double Layer Wide Mouth Gasket	1
9	AC 20826	Wide Mouth Face Plate	1
10	AC 25984	Vacuum Plate & Gasket	1
11	JT 37532	Complete Return Fitting	1
12	BS 40061	Hose Adaptor	2
13	AC 70394	Elbow Fitting	1



- Congratulations on your choice of a Blue Seal® premium thru wall skimmer and return kit. We are confident that you too will discover why Blue Seal® products are unparalleled industry – wide. Our decision to produce the finest quality products has allowed us to become the leader in the pool industry.
- Blue Seal's® Pro Series ABS skimmers have been carefully designed to ensure a perfect fit on all aboveground pools manufactured with the industry standard WIDE MOUTH skimmer cut out.

- Blue Seal® Pro Series Skimmers utilize 100% ABS material in their construction. This material is extremely durable and will provide many years of service to the pool owner with only a minimal amount of maintenance.
- You will find that Blue Seal® Pro Series skimmers can be adapted for use with all of your existing equipment. Thank you for your wise choice of Blue Seal® premium skimmers



## **STEP 1**

- Review the parts you have with the parts listed on page 2. Verify each part and quantity.

## **STEP 2**

- Lower the water level in your pool. Since you are replacing both the skimmer and return you will need to lower the water until it is 2 inches below the return fitting.

## **STEP 3**

- If you have an existing skimmer and return, you need to remove both of these prior to installation.
- If this is a new pool installation, make sure the skimmer knockout plate on the pool wall has been removed and the skimmer screw holes are open. In the event the skimmer knockout is still in place you will have to remove it. This can be accomplished by carefully peeling the knockout out of the wall using a pair of pliers. In some cases it may become necessary to use a hack saw to cut the metal tabs holding the knockout in place. In all cases care must be taken since the metal edges are extremely sharp. Follow pool manufacturer's instructions.

## **STEP 4**

- Cut the wide mouth skimmer opening in the pool liner (new installation only). Using a sharp razor blade, from the inside of the pool begin cutting the wide mouth skimmer opening in your liner. Put light pressure from inside the pool towards the outside on the center of the wide mouth opening. Carefully cut along the inside of the wide mouth opening using the metal edge in the pool wall opening as your guide.

## STEP 5

- Attach the Wide Mouth Adapter to the skimmer body. Place the adapter gasket (AC 70696) over the square opening in the skimmer body and line up the screw holes in the skimmer body with the screw holes in the gasket. Place the square opening of the Wide Mouth Adapter over the gasket lining up the 4 screw holes in the adapter with the corresponding holes in the skimmer body. Secure the adapter to the skimmer body using 4 stainless steel pan head screws from the (AC 70688) hardware pack.

## STEP 6

- Locate the double sided wide mouth gasket (AC 70173). This double sided gasket will sandwich the pool wall and the cut edge of the pool liner inside its fold. To do this, open the fold in one corner of the gasket and place it in the corresponding corner of the skimmer opening. Work your way around the entire skimmer opening until the gasket is in place. Make sure the skimmer screw holes in the wall are lined up with the holes in the gasket.

## STEP 7

- Take the skimmer body and the 4 pan head screws from the hardware bag – **BE SURE TO USE THE PAN HEAD SCREWS ONLY.** Place the skimmer body opening against the gasket on the outside of the pool. Line up the skimmer body so the screw holes in the body line up with the holes in the gasket and wall. From the inside of the pool, locate the pan head screw holes. They are the third hole in from both sides on the top and bottom of the skimmer opening. Look at the underside of the wide mouth face plate (AC 20826) to confirm the pan head screw location. Attach the pan head screws to the skimmer body by screwing them from inside the pool, thru the liner, inside gasket, pool wall, outside gasket and into the skimmer body. **HAND TIGHTEN** these four screws. Once in place the skimmer body is supported by the pool wall.

## **STEP 8**

- Take the skimmer faceplate (AC 20826) and line up the screw holes in the plate to the corresponding holes in the pool skimmer gasket. Insert one stainless steel skimmer screw into each hole and begin to hand tighten each one with a Phillips head screwdriver – DO NOT USE A DRILL OR SCREW GUN- THESE WILL STRIP THE SKIMMER AND VOID YOUR WARRANTY. There are 18 screws used to seal the skimmer to the pool wall.

## **STEP 9**

- Hand tighten all the skimmer screws. Do this by giving each screw a full turn with a Phillips head screwdriver working your way around the faceplate one screw at a time. This will take longer than tightening each screw completely before going to the next, but by tightening each screw one turn at a time you will ensure a complete gasket seal between your pool and skimmer

## **STEP 10**

- Once all the screws are hand tight you should have 18 screws in place and the faceplate should be flush against the pool liner.
- Now that your skimmer has been secured to your pool you can complete the installation.

## **STEP 11**

- Use the Teflon tape provided (BS 35858) to cover all the threads on the hose fitting (BS 40061). Wrap the tape around the threads at least 10 wraps. The Teflon tape will prevent leakage from the fitting. Once the fitting is wrapped you can screw the fitting, threads facing up, into the outside bottom of the skimmer.

## **STEP 12**

- Place the skimmer basket (AC 49603 ) into the skimmer from the top opening . The basket will rest on the lip inside the skimmer body.

## STEP 13

- Install the top cover (AC 70742) onto the skimmer. This is done by simply placing the cover over the top opening and rotating the lid until it locks in place.

## STEP 14

- Install the skimmer weir door (AC 50210). From inside the pool take the skimmer weir door and snap the tabs of the weir into the corresponding holes on the inside of the skimmer opening. Place the weir foam side up and have the tabs face in toward the skimmer. Place the tab on the left side into the corresponding hole. Put pressure towards the left side of the weir and slide the right tab into the corresponding hole on the right side of the skimmer opening. Release the pressure and the weir door should swing freely in position.

## STEP 15

- Connecting the skimmer to your pool pump is accomplished by first attaching either a 1 ½" or 1 ¼" inch diameter hose to the hose fitting located at the base of the skimmer. The hose fitting (BS 40061) accepts both 1 ½" and 1 ¼" inch diameter hoses. Push the cuff of the hose up onto the hose fitting (halfway up for 1 ¼" hose, all the way for 1 ½" diameter hose) Secure the hose to the fitting using a Stainless steel clamp (BS 35815)



## STEP 16



- Connect the other end of the suction hose to the front (intake) port of your pump. Secure the hose using the stainless steel clamp provided.

## STEP 17



- Install the return fitting. Locate the return opening in your pool wall and push the pool liner against the inside of the wall so the liner is protruding outside the pool. CAREFULLY cut a small “x” in the liner where it lines up with the return opening in your pool wall.

## STEP 18

- Disassemble the return assembly (JT 37532 ) so you have just the inside port and one of the rubber return gaskets. Place the rubber return gasket over the threaded part of the return port.



## STEP 19



- From inside the pool, push the threaded part of the return port through the liner opening and the return opening in your pool wall.

## STEP 20

- From outside the pool, place the second RUBBER return gasket onto the threaded part of the return fitting so it touches the outside of the pool wall. Then take the CORK return gasket and place it over the rubber gasket so it DOES NOT TOUCH THE POOL WALL.



## STEP 21



- Take the return locknut and screw it onto the threads of the return fitting from outside the pool. Be sure to have the FLAT side of the nut facing the pool. Using channel lock pliers hand tighten the nut.



## STEP 22

- Take your remaining hose fitting (BS 40061) and wrap the threads with Teflon tape. Again, wrap the threads approximately 10 times to eliminate leaks.



## STEP 23

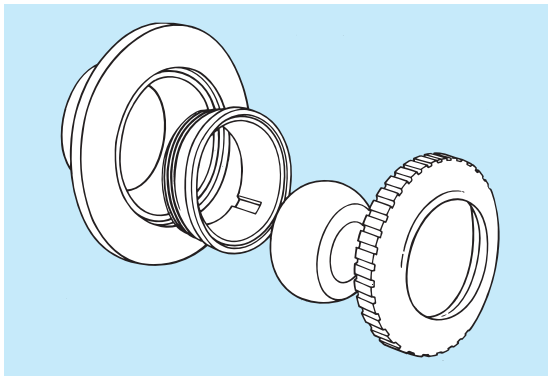


- Thread the fitting into the outside opening of the return fitting. Use a channel lock to get a tight fit.

## STEP 24

- Attach the discharge port of your filter to the return port fitting using a 1 ¼" or 1 ½" diameter hose. Connect one end of the hose to the discharge port of your filter and secure the hose using one of the stainless steel clamps provided. Attach the other end of the hose to the hose fitting attached to the outside of the return using a stainless steel clamp.

## STEP 25



- From inside the pool, screw the ball seat, eyeball and ring into the return port. The ball seat holds the eyeball in place and allows it to pivot, the ring secures it to the return.

## STEP 26

- Begin filling your pool. For best results only add up to 12 inches of water per day and do so when the sun is shining on the pool liner. The sunlight will increase the liners pliability and eliminate wrinkles from the liner pulling on the skimmer and return openings. Continue filling your pool until the water level fills  $\frac{3}{4}$  of the skimmer opening, the upper side screw head on the skimmer plate.

## VACUUMING PROCEDURE

When it is necessary to vacuum your pool, please follow the guidelines listed below, in order to ensure proper suction and successful vacuuming.

1. Make sure that you have a vacuum head with handle, telescopic pole and vacuum hose that is at least 6' longer than your pool (all sold separately).  
**NOTE:** If your pool is 18' round, your hose should be at least 24' long  
**NOTE:** If your pool is 12' x 24' oval, your hose should be at least 30' long
2. You will need your Filter Cartridge, vacuum plate and vacuum elbow to hook up your vacuum.
3. Make sure that your Filter Cartridge is clean inside the skimmer body. Using the Pre-Filter bag versus standard basket will allow skimmer to catch more debris.
4. Attach swivel cuff of vacuum hose onto vacuum head. Attach telescopic pole to vacuum handle and place into bottom of pool.
5. Take the loose end of the hose and bring it to the return underneath the water level with the filter running. The vacuum head will float up as air is forced from the hose. Once the vacuum head has stopped moving and the air bubbles have stopped, all the air is out. This procedure is called priming the hose.
6. Remove top cover of skimmer and place vacuum plate over the skimmer basket with holes aligned over plastic tabs.



**Vacuum Plate going onto Filter Cartridge**

## VACUUMING PROCEDURE — CONTINUED

7. Place vacuum elbow with fat side over top of vacuum plate and make sure that longer side is pointing into the pool (see figure 2).



Facing into skimmer opening  
towards pool

Figure 2 - Vacuum Plate & Elbow on basket

8. Move primed vacuum hose under water level from the return to the skimmer as the filter continues to run. DO NOT bring hose over water level as hose will fill with air.
9. Push weir door down flat into pool so that it does not interfere with vacuuming (see figure 3).



Figure 3 -  
Positioning weir for  
vacuuming

10. Place hose onto vacuum elbow through skimmer opening keeping hose underwater. If you were to look through the outside of the skimmer, it should look as figure 4 does.



Figure 4 - Inside look  
at elbow on plate  
and attached hose

11. You are now ready to vacuum. Remember to keep vacuum underneath water line at all times. Failure to do so will result in the need to re-prime the hose and start over. Breaking the water level allows air to enter the hose and affects your suction.
12. After vacuuming you should remove and clean your skimmer basket to prevent sluggish return flow.

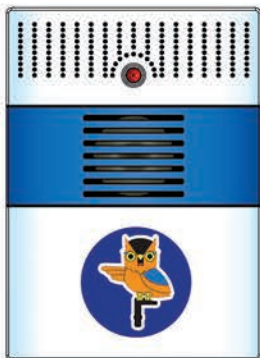
# POOL ALARM SYSTEM



## 24 / 7 Alarm Duty

- Certified to ASTM F2008 for pool alarms
- Comes with a remote receiver which sounds alarm inside home when the unit (pool alarm) is activated
- Electronic sensor detects entry into pool by children, pets, or intruders
- Alarm is designed to detect objects weighing 18 pounds or more
- Pool Alarm (unit) is battery operated - 6 "D" cells
- *Tested against the toughest standards all over the world*

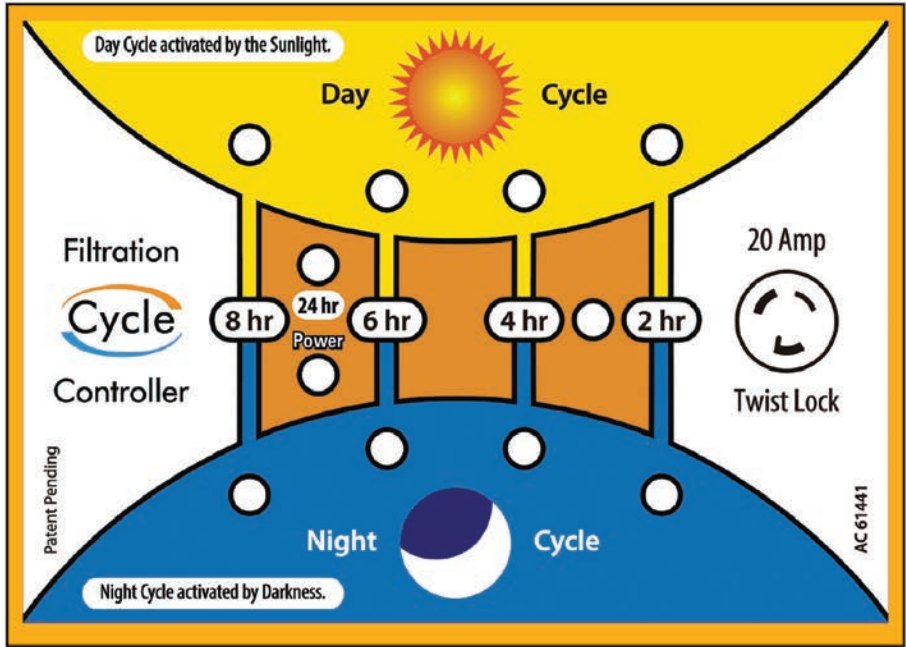
**AC 50032**



**In Ground Pools  
&  
Above Ground Pools**

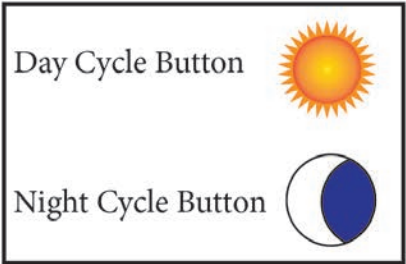


# PROGRAMMABLE TIMERS



### Timer Activated by Sunlight

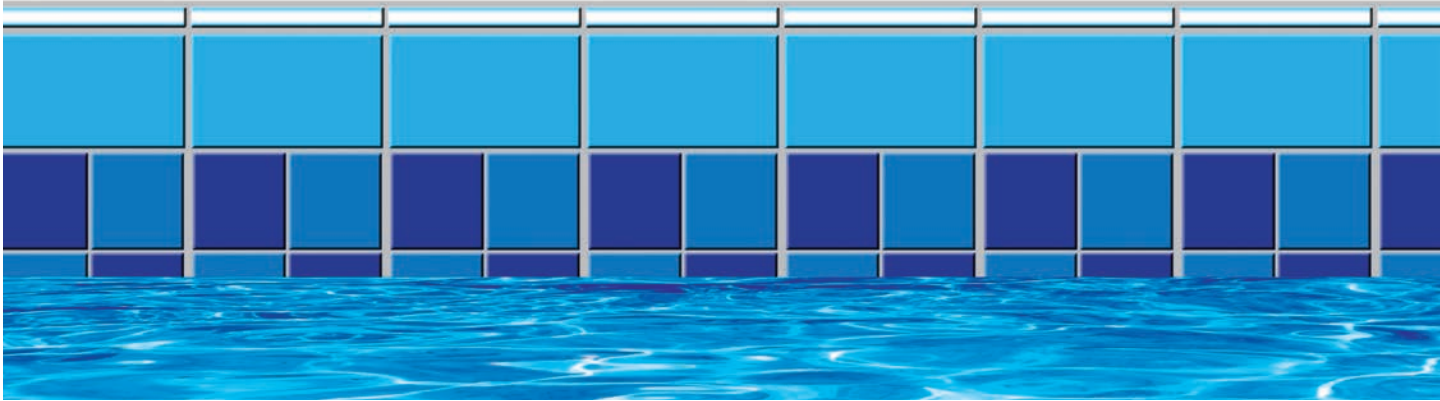
- Day Cycle activated by Sunlight
- Night Cycle activated by Darkness



### PROGRAMMING THE TIMERS:

Patent Pending

- ▶ Press the Day Cycle button once for each 2hour running cycle, the corresponding light will illuminate..... **2 hr , 4 hr , 6 hr , 8 hr lights.**
- ▶ Press the Day Cycle button once for each 2hour running cycle, the corresponding light will illuminate..... **2 hr , 4 hr , 6 hr , 8 hr lights.**
- ▶ To **Run 24 hours**; Press the Day Cycle button **until** the **24 hr** light is illuminated.



## SUNLIGHT ACTIVATED TIMERS



**AC 61417**  
Standard 15 amp

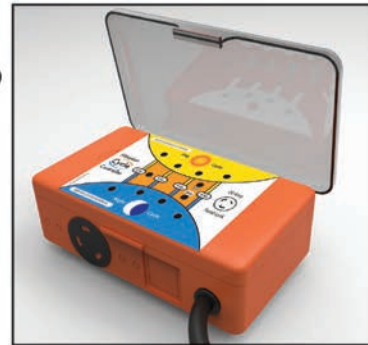


Standard

**AC 61441**  
Twist Lock 20 amp



Twist Lock



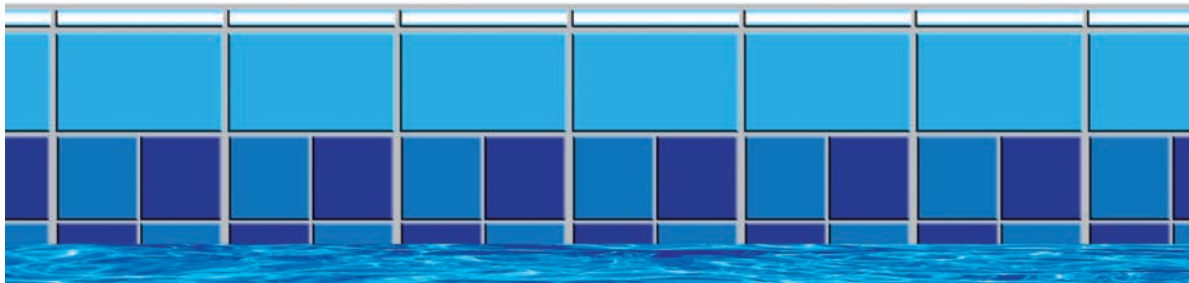
**AC 61433**  
Heavy Duty



Standard



Patent Pending



## HELPFUL HINTS

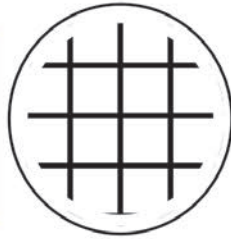
- Always apply 1 qt. of Liquid Magnet (mineral remover) per 10,000 gallons pool water when adding more than 4" of fresh water to your pool. Liquid Magnet will remove minerals, which can permanently damage your element.
- Always remove element when adding chemicals through your skimmer (i.e. Blue Seal® Green Out shock treatment, Chlor-No-More orb, Old Man Winter orb & Blue Seal® Quick Tabs or Gold Dust).
- Never place slow dissolving chlorine tabs (i.e. Blue Seal® Jumbo Slow Tabs, Slow Tabs or Slow Poke Sticks) in skimmer. These are acidic and can weaken your skimmer basket, body and element as well as cause corrosion of metal pump parts. Always use slow dissolving chlorine in an automatic chlorinator or floater.



# SIFTER SYSTEMS

- Extends Filter Cycle, protects your Pump and each basket performs specific Filter Tasks

**Sifter  
Rating  
#3**

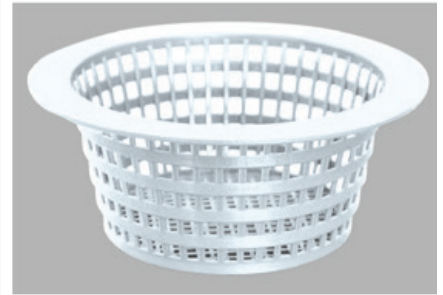


**White**

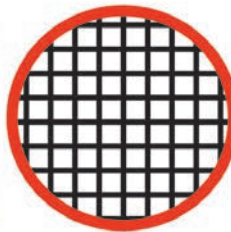
**(Standard Use Basket)**

**REMOVES:**

- Large Leaves
- Twigs
- Large Insects



**Sifter  
Rating  
#7**

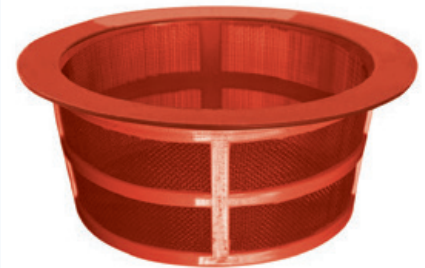


**Red**

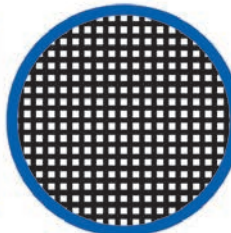
**(Vacuum Basket)**

**REMOVES:**

- Large Leaves
- Twigs
- Large Insects
- Decaying Leaves
- Small Insects
- Grass
- Pine Needles



**Sifter  
Rating  
#10**

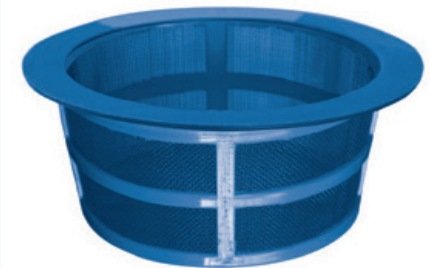


**Blue**

**(Polishing Basket)**

**REMOVES:**

- Large Leaves
- Twigs
- Large Insects
- Decaying Leaves
- Small Insects
- Grass
- Pine Needles
- Pollen
- Clothing Fibers
- Small Insects



- Sifter Systems are available at your local Blue Seal retailer.

# **BLUE SEAL® WIDE MOUTH THRU WALL SKIMMER**

**Model: BS 04243**

## **ONE YEAR LIMITED WARRANTY**

**One year limited warranty from date of purchase.**

The **ABS Wide Mouth Thru Wall Skimmer** Filter is guaranteed to be free of manufacturers defects in material and workmanship under normal use in accordance with the proper installation and operation manual.

**This Warranty** does not cover the following: Damage due to freezing caused by or related to improper drainage, winterization, or storage. Damage or failures arising from use of the product which does not comply with the instructions provided in this manual.

**This Warranty** is in lieu of all other express warranties. Replacement of defective products as provided under this warranty is your exclusive remedy. The manufacturer will not be liable in contract or tort for any direct, consequential, special, or incidental loss or damage arising out of the use or inability to use this product.

### **WARRANTY COVERAGE**

**1st Year** — 100% coverage against any manufacturers defects.

**ALL WARRANTY CLAIMS MUST BE HANDLED DIRECTLY WITH THE  
DEALER WHERE THE PRODUCT WAS PURCHASED. A SALES RECEIPT  
IS REQUIRED TO VERIFY PROOF OF PURCHASE**